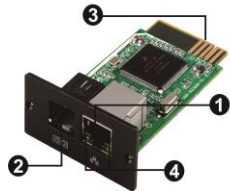


SNMP Web Card Quick Guide For SCC-MPPT

V. 1.0

1. Overview



- ❶ Ethernet port (10/100Base-T)
- ❷ Sensor port
- ❸ Golden finger: connects to UPS slot
- ❹ Ethernet port status LEDs

Ethernet port status LEDs:

100M LED (Green)	Flash	Port is operating at 100Mbit/s
	Off	Card is not connected to the network
10M LED (Yellow)	Flash	Port is operating at 10Mbit/s
	Off	Card is not connected to the network

2. Installation

Please follow below steps to install SNMP web card first:

Step 1: Remove the cover of intelligent slot on the back panel of device and retain the screws

Step 2: Slide the card into the open slot and secure with the screws from step 1. (see chart 2-1)

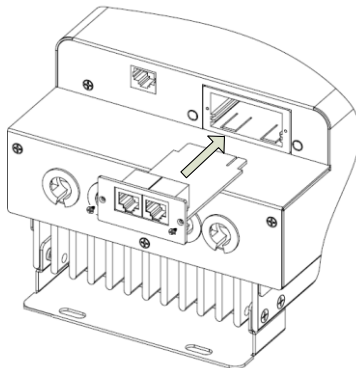


Chart 2-1

3. Connection

Plug Ethernet cable to the Ethernet port (RJ-45) on the SNMP web card. Use one more Ethernet cable. Connect one end to the sensor port on the SNMP web card and the other end to the optional environmental monitoring device. Refer to chart 3-1 for wiring diagram.

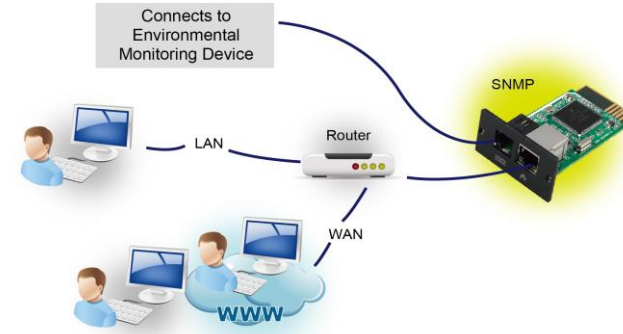


Chart 3-1

4. Configuration

- a) Please install SNMP web manager software in your PC. After software is installed successfully, the Installer will leave a shortcut icon on your desktop.



Chart 4-1

- b) Enter specific IP address to search all SNMP devices in LAN. The SNMP web manager will automatically collect the IP address from sever by default via a DHCP server. It will apply default IP address of 192.168.102.230, default subnet mask as 255.255.255.0, and default gateway as 0.0.0.0 without a DHCP server.

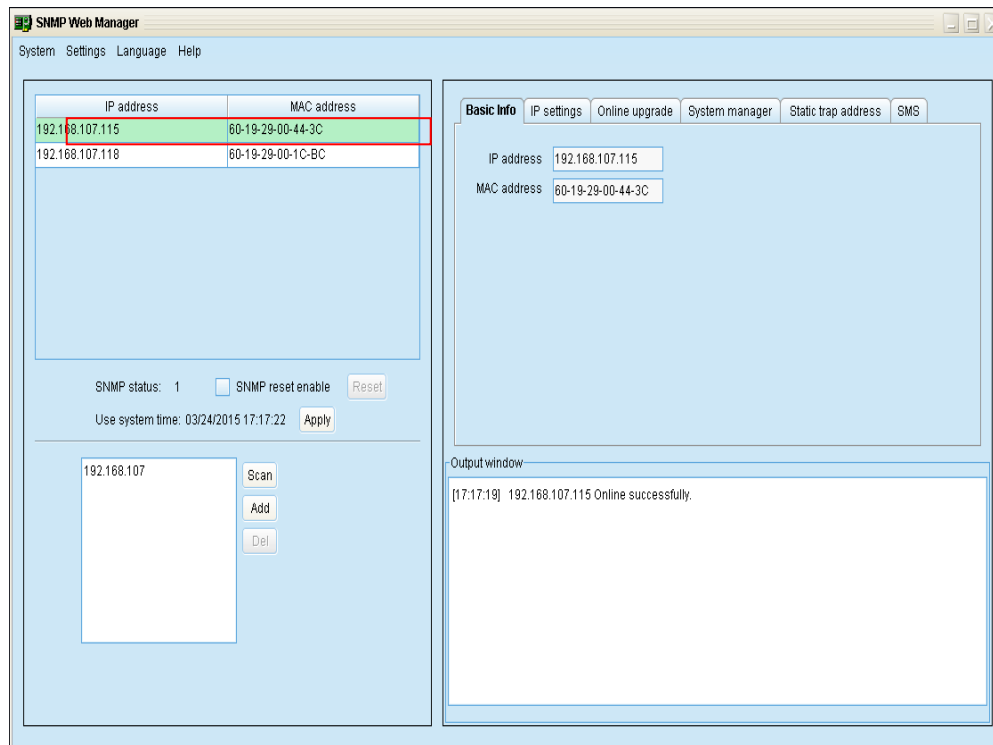


Chart 4-2

- c) User can modify IP setting, online upgrade, password management, and static trap address setting in SNMP Web Manager interface. It is necessary to enter password for any medications. The default password is 12345678.

5. Monitoring

Double click the selected device from the device list (refer to Chart 4-2) to open web page as Chart 5-1.

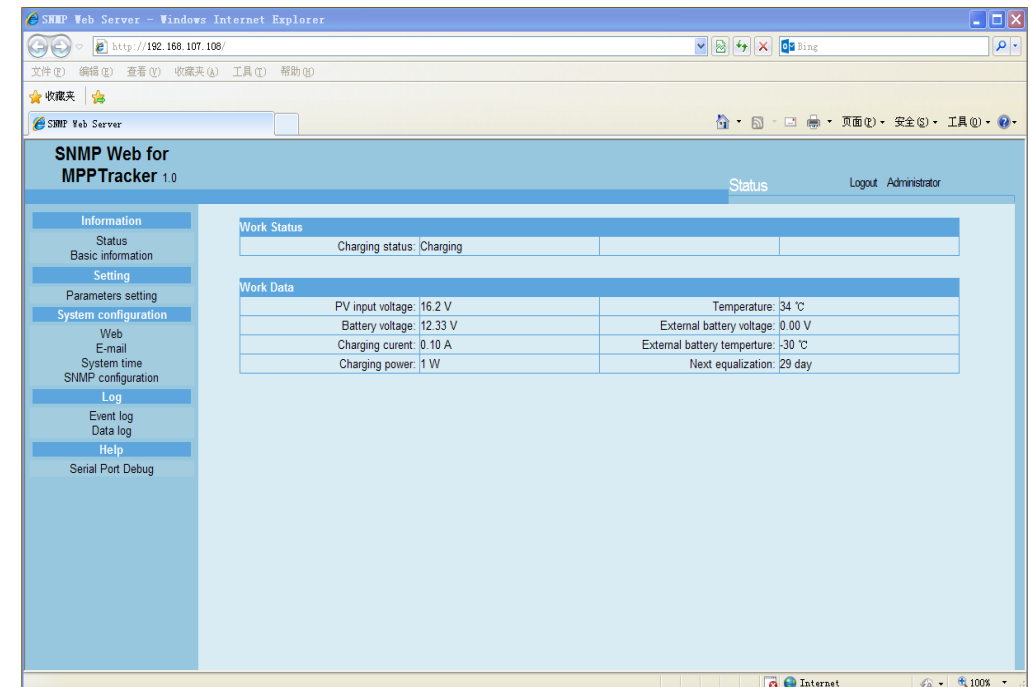


Chart 5-1

Please check SNMP Web Manager User Manual for detailed configuration.